



NG911 GIS User Group

2021 Q2 Meeting May 27, 2021

<https://kansas.zoom.us/j/98082052078>

Meeting ID: 980 8205 2078

Passcode: 258040

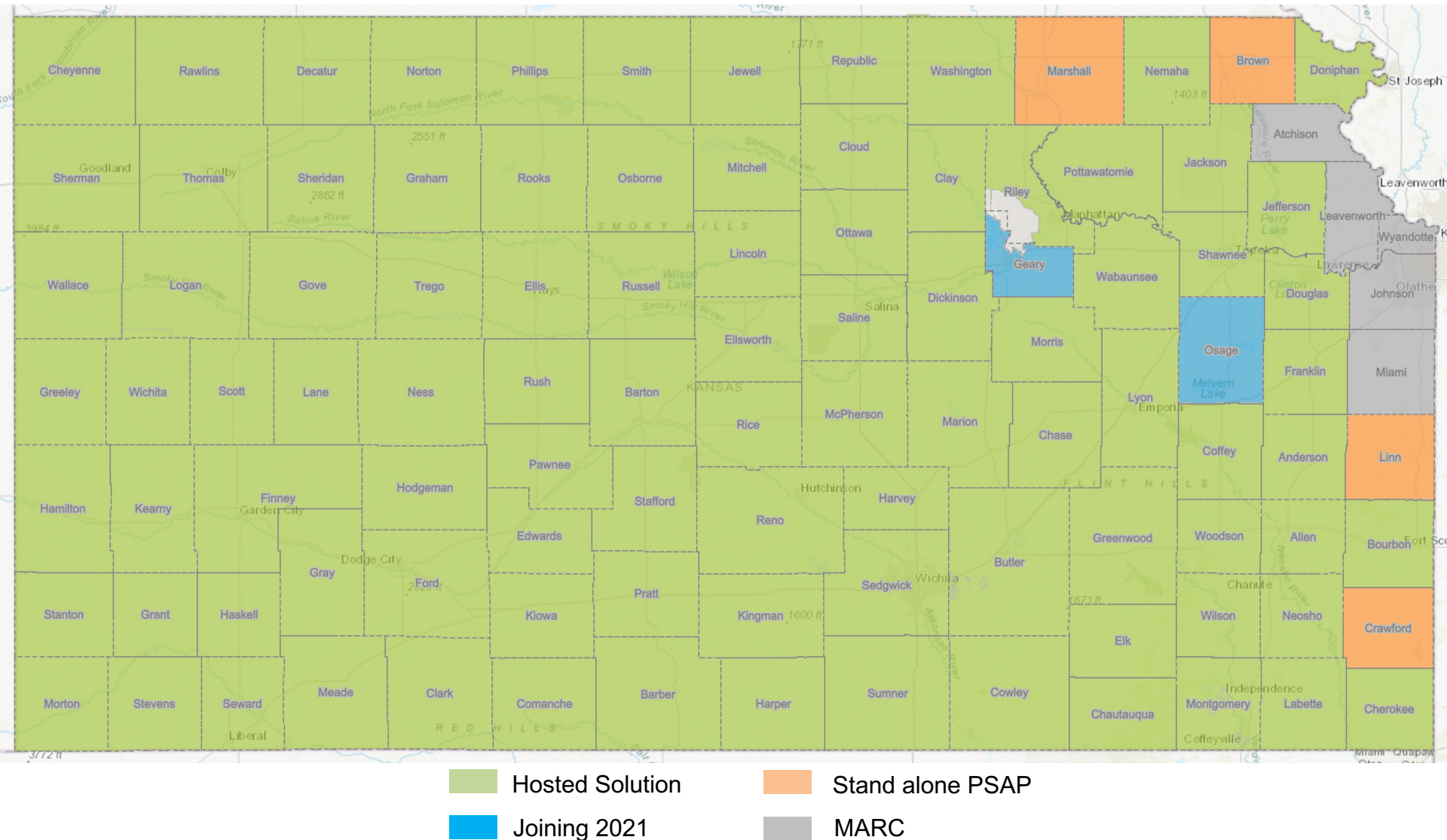


- Project Update
- 2021 Kansas NG911 Orthoimagery
- NG911 Toolbox
- GeoMSAG and Geospatial Call Routing

NG911 Project Update



Kansas Hosted Solution System



GIS data maintenance schedules



Quarterly GIS data submission deadline

- Q2 deadline – June 30, 2021

2020 – 2021 KS NG911 Submission statistics

Year	Quarter	Changes	No Changes
2021	1	93	13
2020	4	91	16
2020	3	90	17
2020	2	99	8
2020	1	97	8

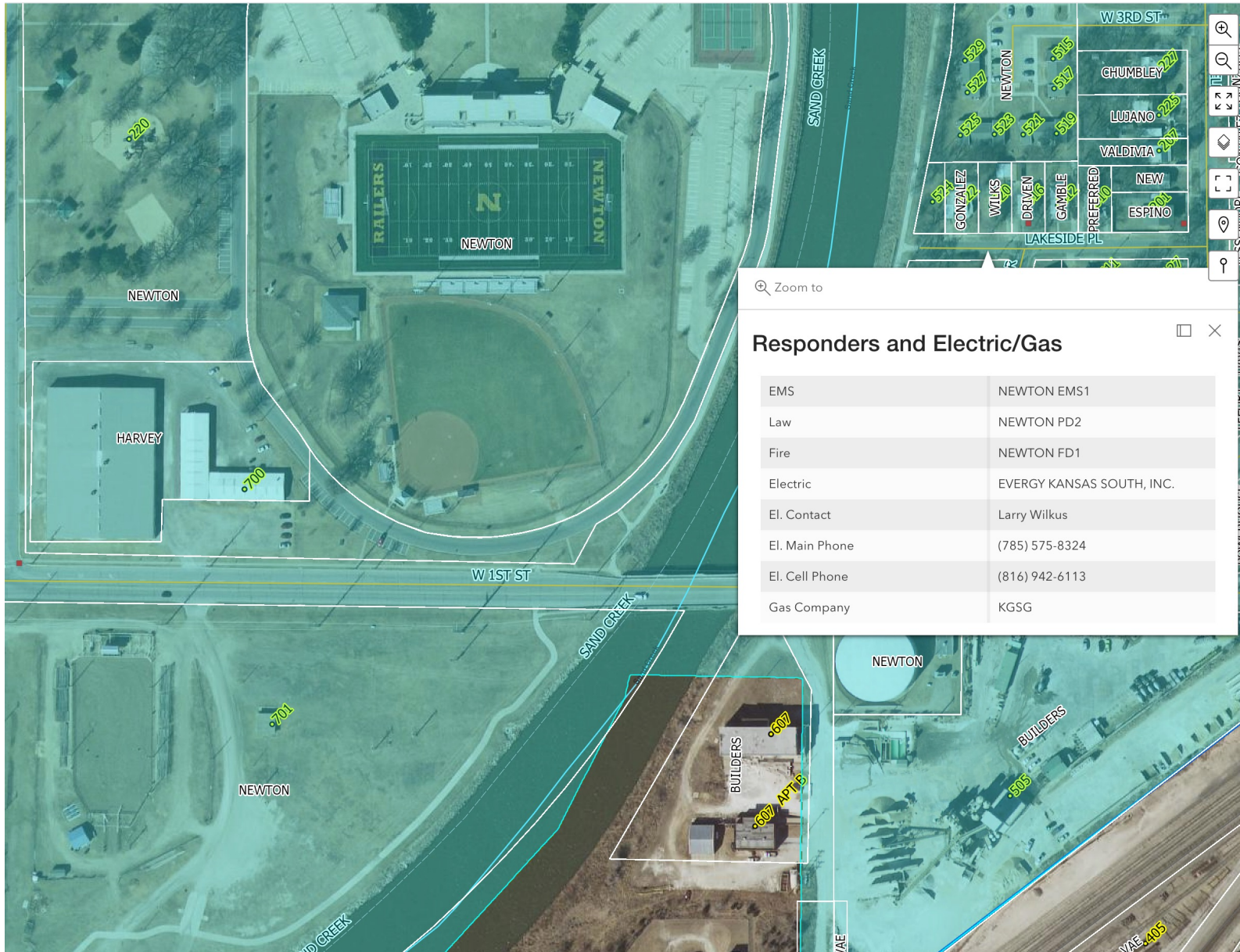
RapidDeploy's RadiusPlus

- Optimized web map deployed across the hosted solution on May 18
- Configuration change behind the scenes
 - Kansas web map = Vector tiles services + NG911 imagery service
- Tile layers support fast visualization of large datasets
- Added KCC's Natural Gas Distribution Boundaries to web map

NG911 mapping solution



RapidDeploy's RadiusPlus



2021 NG911 Orthoimagery Update



2021 Imagery Timeline

- ✓ Acquisition – mid-February 2021 – mid-April 2021
- ✓ Pilot area delivery – May 2021
- Imagery posted to SurCheck for QA – September 2021
- Final delivery – January 2022

2021 NG911 Orthoimagery Update



2021 NG911 Imagery product specs

- Statewide, 1-foot, leaf-off, color/CIR
- No license restrictions, public domain
- File formats:
 - GeoTIFF
 - MrSID
- Map projections:
 - Kansas State Plane (North/South)
 - Kansas Regional Coordinate System
 - Lambert Conformal Conic
 - State Plane 2022 (once reference frames are published)

Orthoimagery Program – Buy-up options



Buy-Up Options Kansas Orthoimagery

Surdex Corporation is a photogrammetric mapping firm that has been supplying accurate and precise geospatial information to a diverse client base for over 65 years. We provide our clients with various mapping services, including aerial image acquisition, lidar acquisition and processing, digital orthoimagery, and planimetric and topographic mapping. We have been fortunate to work closely with the State of Kansas as well as many counties and municipalities in the past and look forward to continuing to build partnerships in Kansas moving forward.

Using the State Contract will save you time and money by:

- Not having to prepare an RFP and evaluate the responses.
- Having a service provider that already has equipment in the area working for the State and other local governments.
- Utilizing the special payment terms offered by Surdex and the 911 Coordinating Council.

Buy-up Options

6-inch Imagery Options

Contiguous Square Miles	Price Per Square Mile
26 - 100	\$150 - 300
101 - 500	\$95 - 150
501 - 1000	\$75 - 140
1001 - 3000	\$66 - 130
3000 +	\$65 - 110

3-inch Imagery Options

Contiguous Square Miles	Price Per Square Mile
26 - 100	\$400 - 600
101 - 500	\$175 - 350
501 - 1000	\$150 - 300
1001 +	\$130 - 200

Planimetric Mapping / Impervious Surface Mapping

Case by case, negotiable

Lidar acquisition / processing

Case by case, negotiable

Surdex Sales Contact

Tim Donze
VP Business Development
DIRECT 314-422-7616
OFFICE 636-368-4424
MAIN 636-368-4400
EMAIL TIMD@SURDEX.COM
Surdex Corporation
520 Spirit of St. Louis Blvd.
Chesterfield, MO 63005

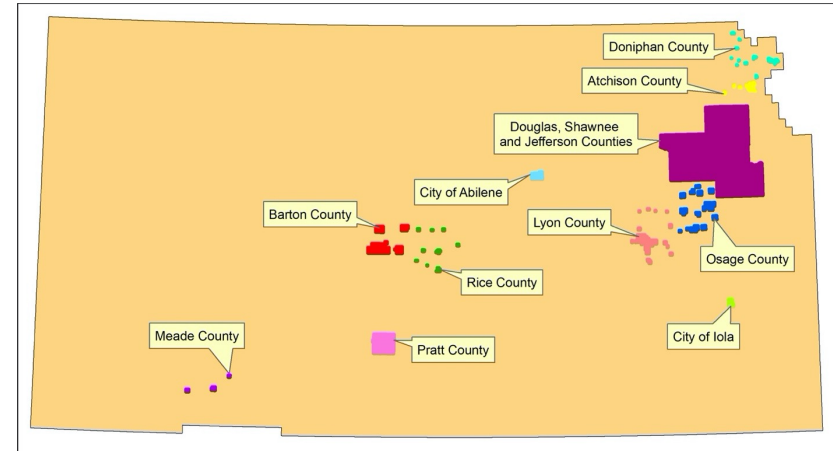
Kansas Program Contact

Kenneth A. Nelson
Kansas Geographic Information Officer
VOICE 785-864-2164
FAX 785-864-5317
EMAIL NELSON@KGS.KU.EDU
State of Kansas Data Access & Support Center (DASC)
Kansas Geological Survey (KGS)
University of Kansas, 1930 Constant Avenue
Lawrence, KS 66047



Your Strategic Geospatial Resource
surdex.com • 636-368-4400 • info@surdex.com

- Previous buy-up participants:
 - 12 buy-up projects
 - 3,540 square miles



- All buy-up projects will be designed and estimated based on the needs of each organization
- Agreements between organization and Surdex
- Contact Tim Donze
 - TIMD@SURDEX.COM
 - (314) 422-7616

NG911 Toolbox Update

Kristen Jordan Koenig

Toolbox Updates

- New version out in early May- get a copy if you haven't already
- Biggest update- checking that address point lat/long values are inside the PSAP
- One bug- wasn't skipping SUBMIT = 'N' records
- Fixed on GitHub, download if needed

Future Toolbox Updates

- Getting some strange characters that Intrado doesn't like
- Characters like */#
- Typed in null
- Added tool to check values for these, add a warning
- We will strip them out before sending to Intrado

Computer Science Today: *null*

- *null* is a state of being, not a value
- *null* is the state of being empty
- `<NULL>`/`<null>`/`null` typed in is not *null*

null



`<NULL>`

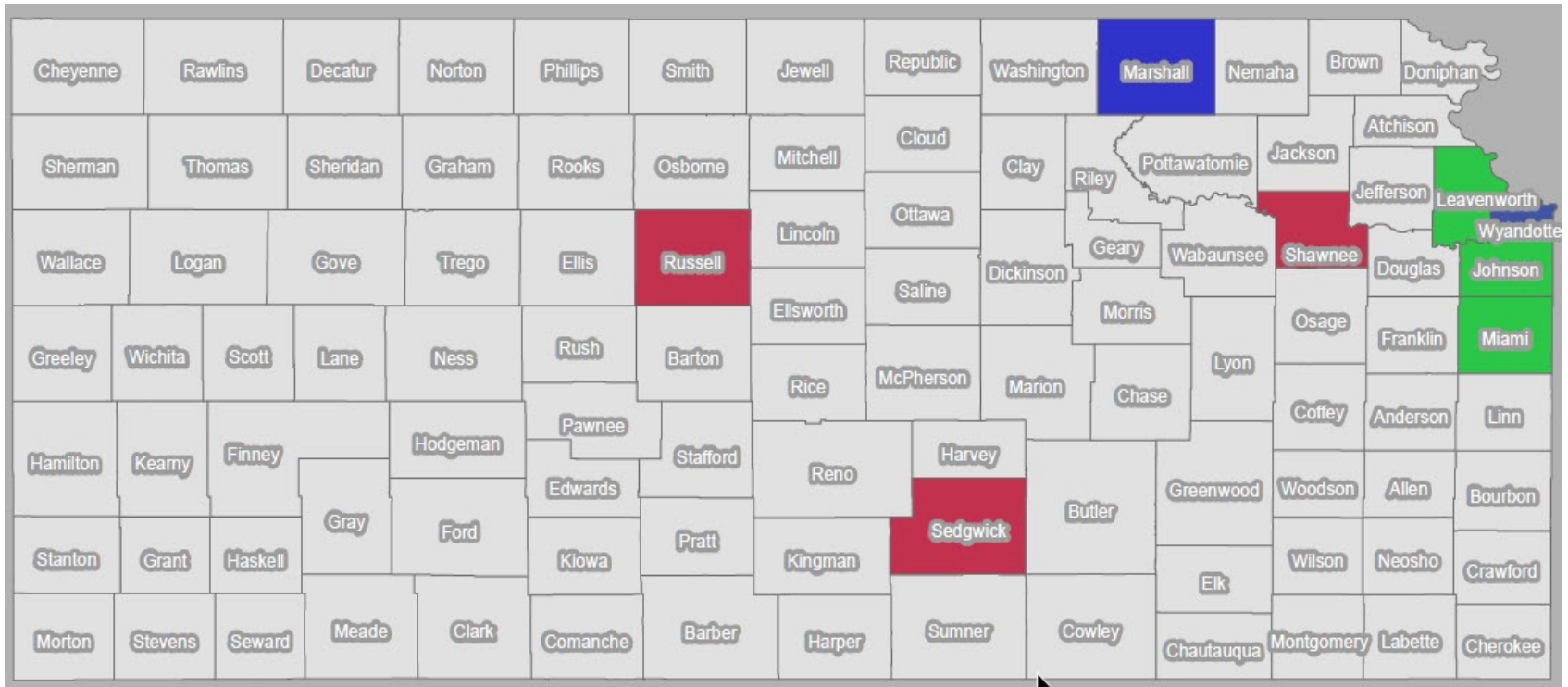


GeoMSAG and Geospatial Call Routing Update

News Items

- 102 PSAPs are on the system routing solely with GIS data. 2 more will be coming online in the next few months: Osage and Geary County/Junction City
- Training
 - GIS Data Steward class has been created as an online class for 911 personnel. If there is interest, we will hold a Data Steward class at this fall's APCO conference.
 - GIS Data Maintainer class will be probably around KAM, and probably in person
 - The recording of last year's session is available online, and all the information is still relevant

ESB Alignment Status Map



AT&T's Public Safety Platform

- 911Net is going away for us, which means no more Entrust tokens
- AT&T's PSP is coming to replace it
- We are testing the new platform's GIS functions with AT&T, and more information will be coming soon
- Messages to the PSAPs about access and training have been inconsistent
- If you have access to 911Net, you will continue to use it for viewing your geoMSAGs and TNs and for submitting TN Change Requests until you hear from us





NG911 GIS User Group

Thank you!

Kansas 911 Coordinating Council website

<http://www.kansas911.org/>

DASC - Initiatives>NG911

<http://www.kansasgis.org/initiatives/NG911/>