

# NG911 GIS User Group

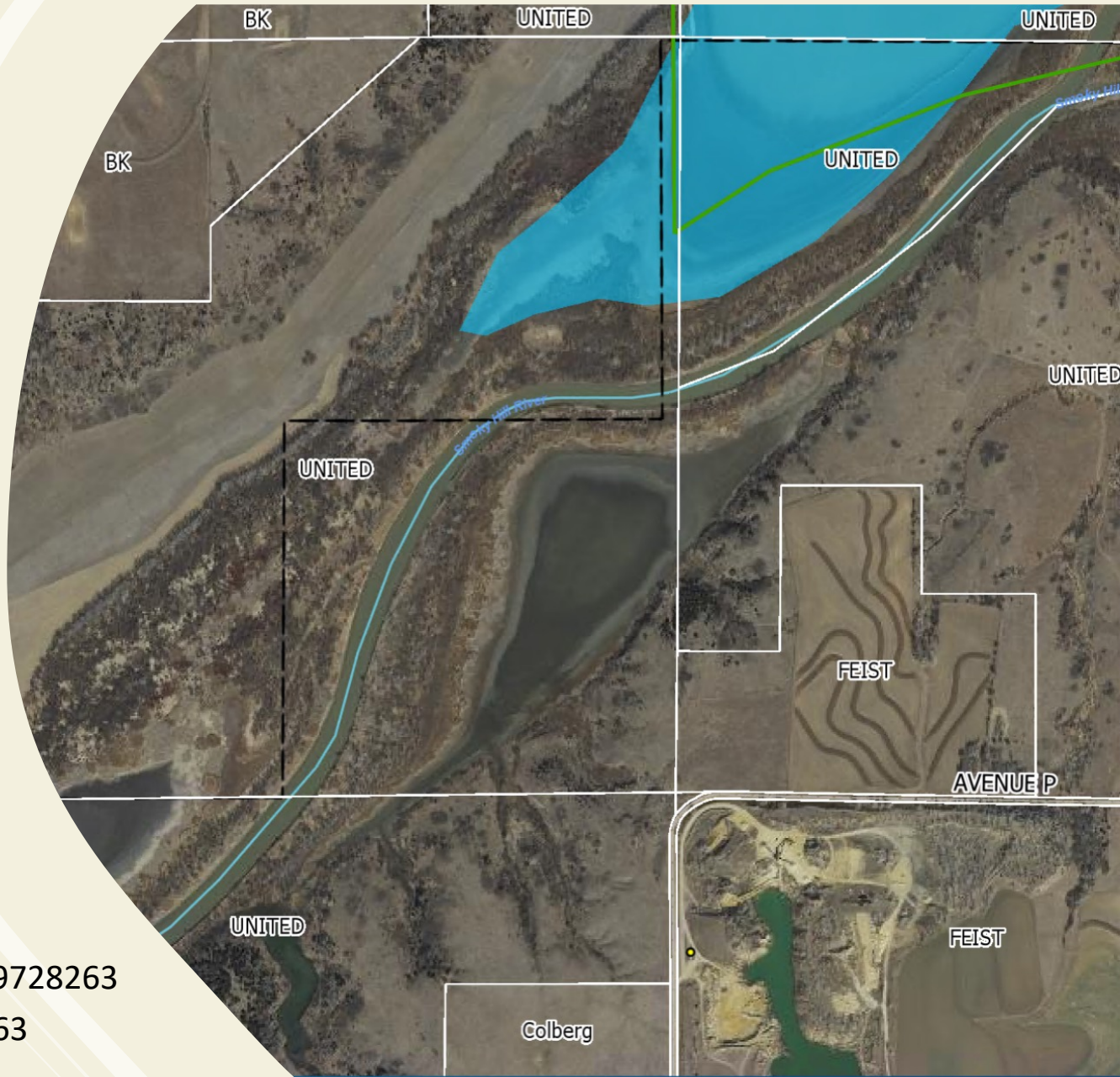
2021 Q3 Meeting  
September 16,  
2021



<https://kansas.zoom.us/j/98719728263>

Meeting ID: 987 1972 8263

Passcode: 544790



- Project Update
- NG911 Toolbox Update
- GeoMSAG and Training Update
- 2021 Kansas NG911 Orthoimagery
  - SurCheck Imagery Visual Inspection Tool demonstration
  - How to sign up and help!

# NG911 Project Update

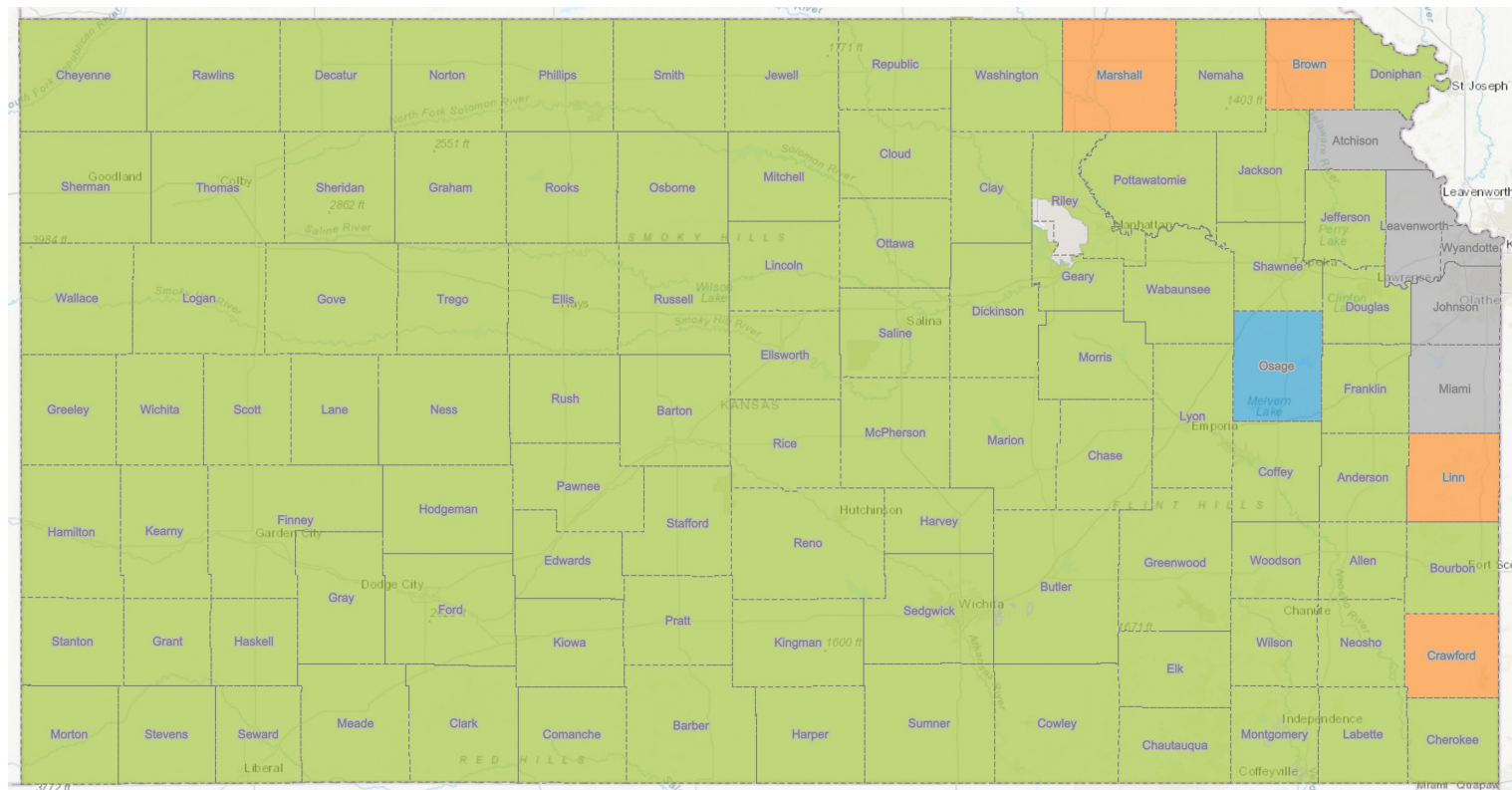


## NG911 GIS data submission deadline

- Q3 – September 30, 2021

Kansas NG911 GIS Data Requests – send all requests for NG911 GIS data to the Kansas NG911 Portal

## Kansas Hosted Solution System Status Map



# NG911 Toolbox Update

Kristen Jordan Koenig

# Toolbox Updates

- New copy coming out mid-October.
- Toolbox hasn't been flagging road dangles correctly.
- Nobody with EGDMS complained.
  - You can keep your dangles through 9/30/2021 submission.

# GeoMSAG and Training Update



# Missing GeoMSAG Entries

▼ MSAG Query Results - 28 Records

Details	Mass Change	Mass Delete	Change	Insert	Delete	Split	Combine
---------	-------------	-------------	--------	--------	--------	-------	---------

Viewing page 2 of 2 (28 records). [Previous Page](#) 2 [Next Page](#)

☐ 1 records selected of 28 records returned.

<input type="checkbox"/>	MSAG Type	Dir	Street ▲	Community	County	ST	Low	High	O/E	ESN	Exch	Entity	MSAG Sys	Last Updated
<input type="checkbox"/>	geoMSAG	S	ALLEN AVE	CHANUTE	133	KS	1300	1330	E	4850	CHA	5M	CPDESI	2020-06-01 13:28:58.632674
<input type="checkbox"/>	geoMSAG	S	ALLEN AVE	CHANUTE	133	KS	1301	1329	O	4850	CHA	5M	CPDESI	2020-06-01 13:29:16.686499
<input type="checkbox"/>	geoMSAG	S	ALLEN AVE	CHANUTE	133	KS	1400	1426	E	4850	CHA	5M	CPDESI	2020-06-01 13:29:43.668718
<input type="checkbox"/>	geoMSAG	S	ALLEN AVE	CHANUTE	133	KS	1401	1425	O	4850	CHA	5M	CPDESI	2020-06-01 13:29:59.937048
<input type="checkbox"/>	geoMSAG	S	ALLEN AVE	CHANUTE	133	KS	1428	1430	E	4850	CHA	5M	CPDESI	2020-05-22 16:41:28.953505
<input type="checkbox"/>	geoMSAG	S	ALLEN AVE	CHANUTE	133	KS	1429	1431	O	4851	CHA	5M	NEOESI	2020-05-22 16:41:20.212397
<input checked="" type="checkbox"/>	geoMSAG	S	ALLEN AVE	CHANUTE	133	KS	1500	1510	E	4850	CHA	5M	CPDESI	2020-05-22 16:42:00.126046
<input type="checkbox"/>	geoMSAG	S	ALLEN AVE	CHANUTE	133	KS	1600	1614	E	4850	CHA	5M	CPDESI	2020-05-22 16:42:09.336928

# Data Maintainer Training

Tuesday, October 26, 2021, from 9am to 12am

Class will be offered remotely, as all Council-related activities have been ordered to be remote through the end of the year.

It may be broadcasted in a room at the KAM conference, but that is still being worked out.

A recording of the class will be made available online



# Surdex SurCheck Imagery Review Demonstration

---



Jim Gottgetreu, CP

*Project Manager*

**Surdex Corporation**

520 Spirit of St. Louis Blvd.

Chesterfield, MO 63005

Direct 719.534.3138

Jack King

*Sales Representative*

**Surdex Corporation**

520 Spirit of St. Louis Blvd.

Chesterfield, MO 63005

Cell: (601) 405-4070

Office: (636) 368-4400

Direct: (636) 368-4420

# 2021 Kansas Statewide Orthoimagery – QA/QC

1 - Sign up to help

<https://forms.gle/zoDnLmvTR5c3HwPs7>

2 – \*Wait for a follow up email from DASC

The email will contain the SurCheck Training Guide, along with your SurCheck log in credentials and Block URL

A recording of this meeting will be posted on the Kansas 911 Coordinating Council's website and the DASC website.

*\*You may not receive an email right away, this is entirely dependent on when your zone is made available for review.*



## Kansas 2021 NG911 Imagery review - Surdex SurCheck volunteer sign up

Access instructions will be sent out AFTER the SurCheck training presentation during the 2021 Q3 Kansas NG911 GIS User Group webinar on Sept 16, 2021 from 2-3:15pm.

2021 Q3 Kansas NG911 GIS User Group webinar connection information -

<https://kansas.zoom.us/j/98719728263>

Meeting ID: 987 1972 8263

Passcode: 544790

 battles@kgs.ku.edu (not shared) [Switch account](#)

\* Required

First and Last Name \*

Your answer

Organization \*

Your answer

Email \*

Your answer

Imagery review areas will be assigned by county. Please check all of the counties that you would be willing to review. County staff will be giving priority for their county. \*

☐ Allen

☐ Anderson

☐ Atchison

# Orthoimagery Program – Buy-up options



## Buy-Up Options Kansas Orthoimagery

**S**urdex Corporation is a photogrammetric mapping firm that has been supplying accurate and precise geospatial information to a diverse client base for over 65 years. We provide our clients with various mapping services, including aerial image acquisition, lidar acquisition and processing, digital orthoimagery, and planimetric and topographic mapping. We have been fortunate to work closely with the State of Kansas as well as many counties and municipalities in the past and look forward to continuing to build partnerships in Kansas moving forward.

Using the State Contract will save you time and money by:

- Not having to prepare an RFP and evaluate the responses.
- Having a service provider that already has equipment in the area working for the State and other local governments.
- Utilizing the special payment terms offered by Surdex and the 911 Coordinating Council.

### Buy-up Options

#### 6-inch Imagery Options

Contiguous Square Miles	Price Per Square Mile
26 - 100	\$150 - 300
101 - 500	\$95 - 150
501 - 1000	\$75 - 140
1001 - 3000	\$66 - 130
3000 +	\$65 - 110

#### 3-inch Imagery Options

Contiguous Square Miles	Price Per Square Mile
26 - 100	\$400 - 600
101 - 500	\$175 - 350
501 - 1000	\$150 - 300
1001 +	\$130 - 200

#### Planimetric Mapping / Impervious Surface Mapping

Case by case, negotiable

#### Lidar acquisition / processing

Case by case, negotiable

### Surdex Sales Contact

**Tim Donze**  
VP Business Development  
DIRECT 314-422-7616  
OFFICE 636-368-4424  
MAIN 636-368-4400  
EMAIL TIMD@SURDEX.COM  
Surdex Corporation  
520 Spirit of St. Louis Blvd.  
Chesterfield, MO 63005

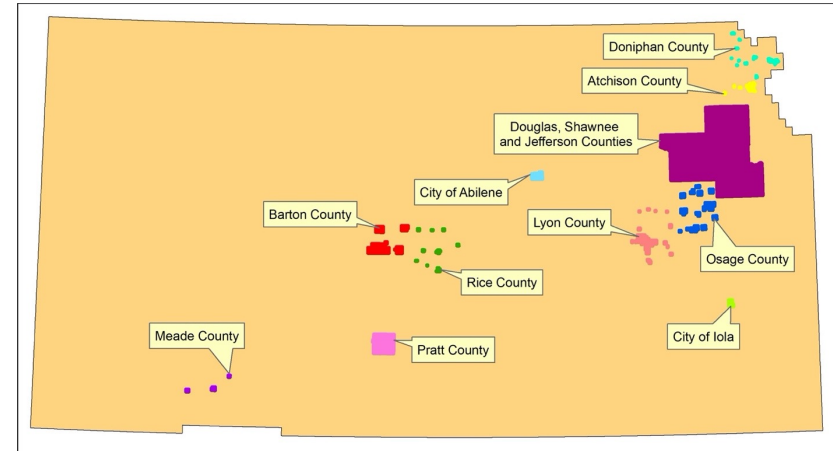
### Kansas Program Contact

**Kenneth A. Nelson**  
Kansas Geographic Information Officer  
VOICE 785-864-2164  
FAX 785-864-5317  
EMAIL NELSON@KGS.KU.EDU  
State of Kansas Data Access & Support Center (DASC)  
Kansas Geological Survey (KGS)  
University of Kansas, 1930 Constant Avenue  
Lawrence, KS 66047



Your Strategic Geospatial Resource  
surdex.com • 636-368-4400 • info@surdex.com

- Previous buy-up participants:
  - 12 buy-up projects
  - 3,540 square miles



- All buy-up projects will be designed and estimated based on the needs of each organization
- Agreements between organization and Surdex
- Contact Jack King
  - [jack.king@surdex.com](mailto:jack.king@surdex.com)
  - (601) 405-4070



# NG911 GIS User Group

Thank you!

Kansas 911 Coordinating Council website

<http://www.kansas911.org/>

DASC - Initiatives>NG911

<http://www.kansasgis.org/initiatives/NG911/>