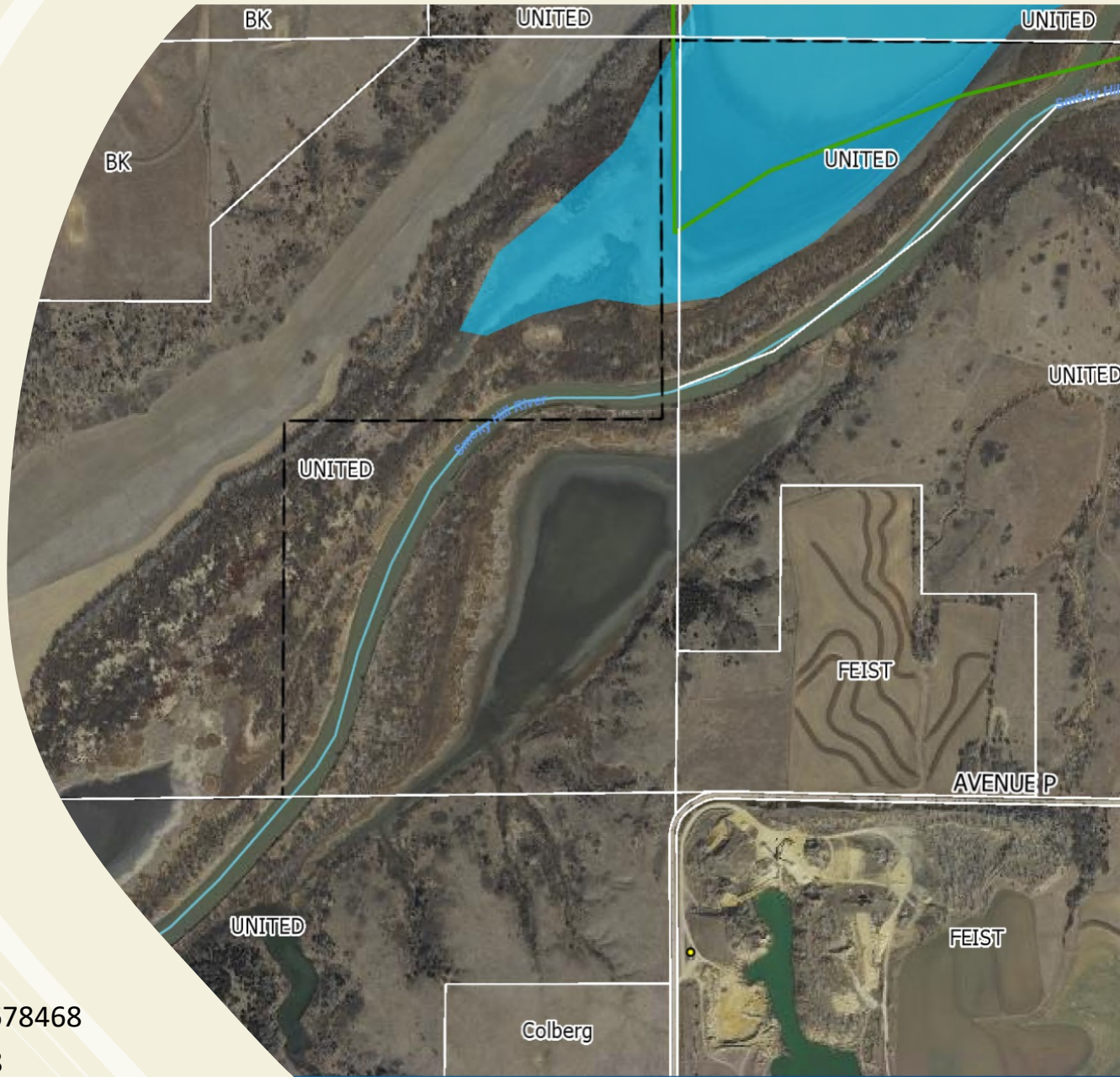


NG911 GIS User Group

2021 Q4 Meeting
12/14/21



<https://kansas.zoom.us/j/95933678468>

Meeting ID: 959 3367 8468

Passcode: 036533

NG911 GIS User Group 2021 Q4 Agenda



- DASC and NG911 Project Update
- NG911 Toolbox Update
- GeoMSAG and Training Update

New DASC Staff – GIS Developers



Dave Grolling
dgrolling@ku.edu

- DASC, ORKA, AGOL, DASC ArcGIS Hub, other DASC initiatives, Esri licensing, GIS user groups, etc
- Works remotely from Silver Spring, MD
- Just got married!



William Trimble
williamtrimble@ku.edu

- NG911 – Toolbox, post processing, map services, NG911 GIS user group, training and outreach, etc
- Hybrid home & office
- New dad – It's a girl!

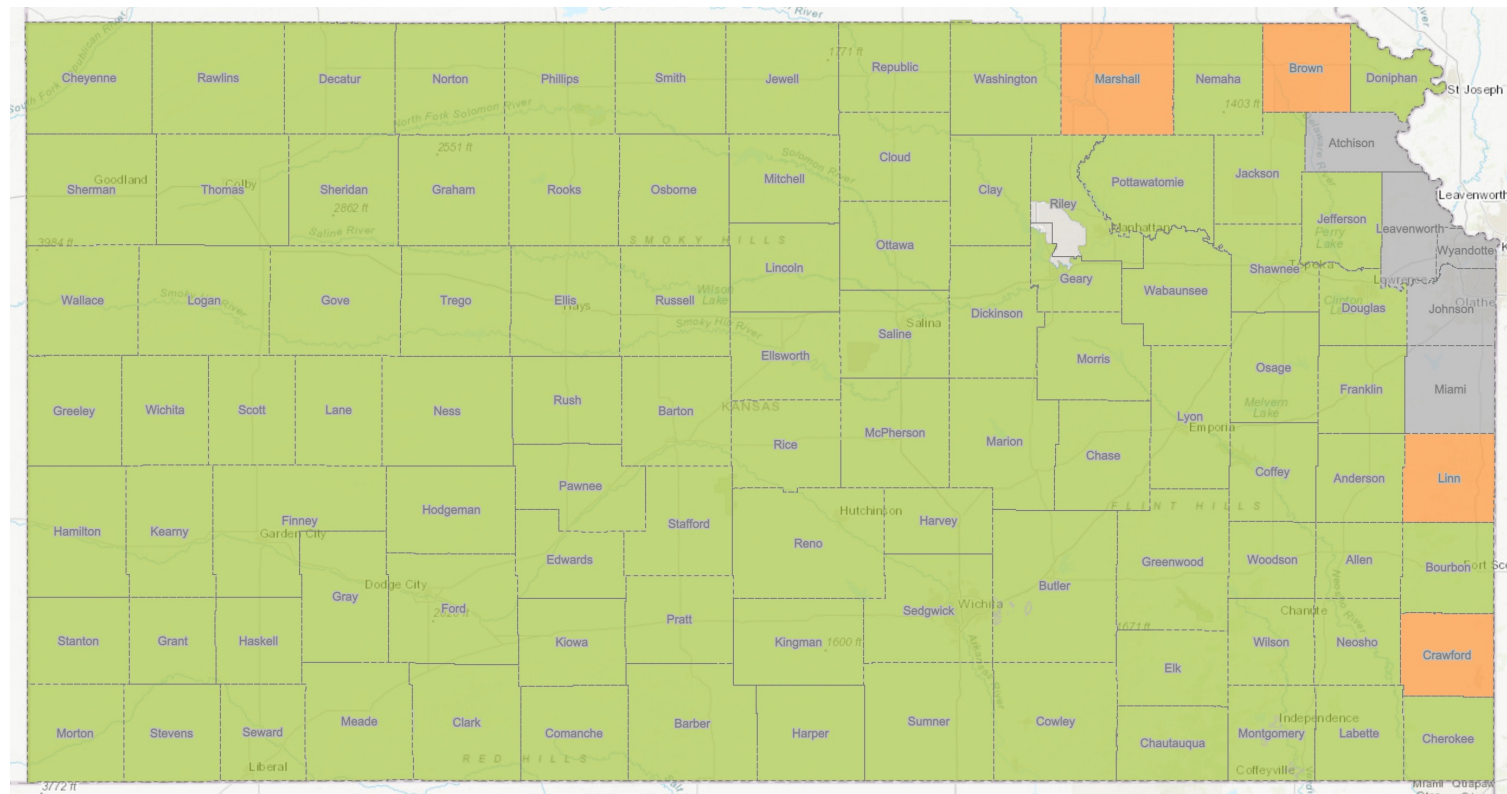
NG911 Project Update



NG911 GIS data submission deadline

- Q4 – December 31, 2021

Kansas Hosted Solution System Status Map



Hosted Solution



Stand alone PSAP

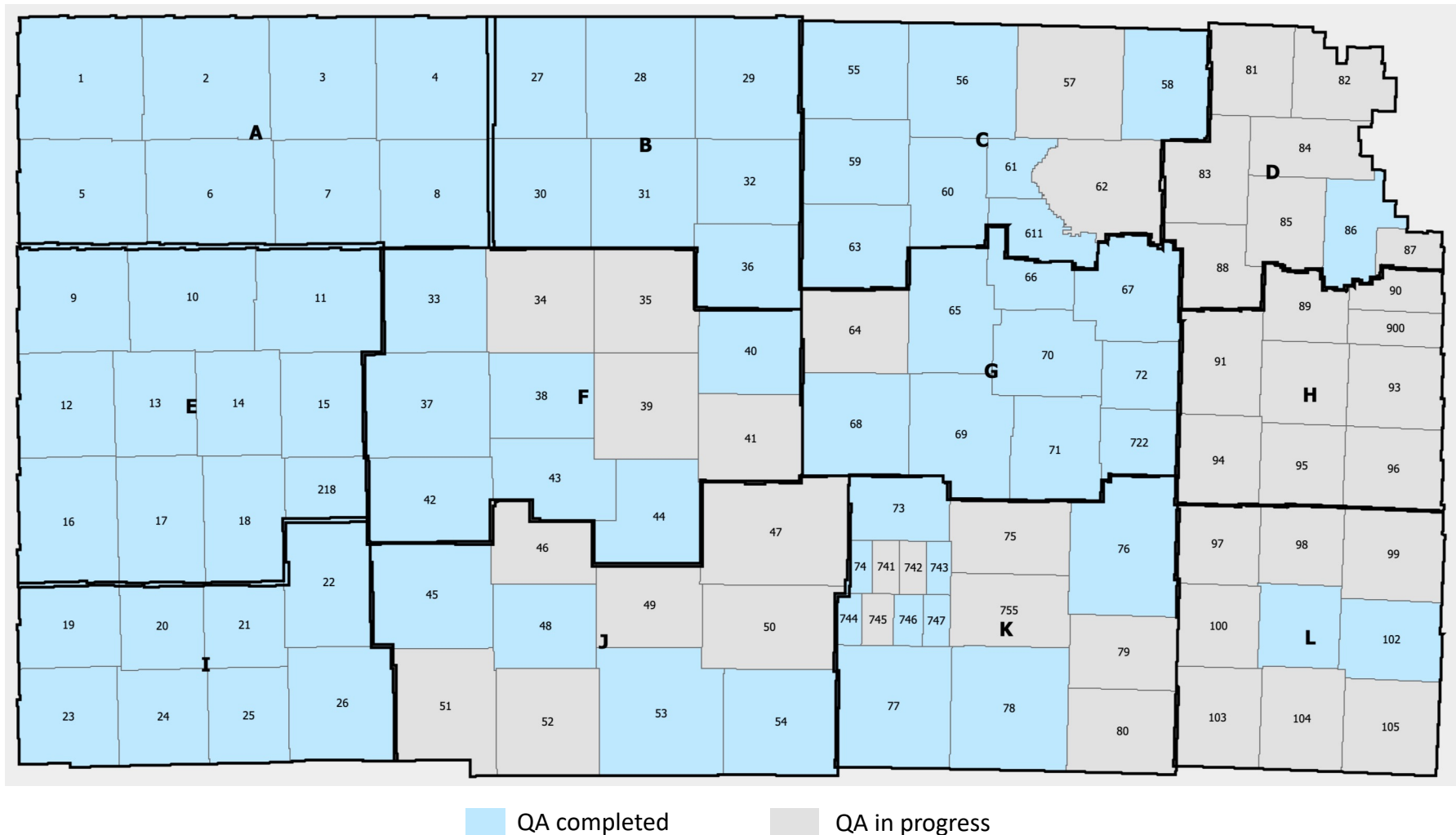


MARC


2021 NG911 Imagery QA status



- 50 SurCheck imagery inspectors across the state!
- Many inspected multiple counties
 - Super inspectors Lisa Olson, Susan Schulte and Alice Keene
- Thank you to everyone for your help – we are making progress!



2021 NG911 Imagery

- When will the imagery be available?
 - 2022 Q2
 - Available for download/access on the DASC website
 - public domain no data request needed – YAY! 
 - Image service
 - data download
 - New 2021 NG911 imagery service will replace the 2018 NG911 imagery service used in the Kansas base map for the hosted system call handling mapping software

2018 NG911 Imagery

- Will become public domain in the next few weeks

2021 USDA FSA NAIP Imagery (not NG911 but since I am talking about imagery ...)

- Has not been released but will be made available on the DASC website when it is available

Orthoimagery Program – Buy-up options



Buy-Up Options Kansas Orthoimagery

Surdex Corporation is a photogrammetric mapping firm that has been supplying accurate and precise geospatial information to a diverse client base for over 65 years. We provide our clients with various mapping services, including aerial image acquisition, lidar acquisition and processing, digital orthoimagery, and planimetric and topographic mapping. We have been fortunate to work closely with the State of Kansas as well as many counties and municipalities in the past and look forward to continuing to build partnerships in Kansas moving forward.

Using the State Contract will save you time and money by:

- Not having to prepare an RFP and evaluate the responses.
- Having a service provider that already has equipment in the area working for the State and other local governments.
- Utilizing the special payment terms offered by Surdex and the 911 Coordinating Council.

Buy-up Options

6-inch Imagery Options

Contiguous Square Miles	Price Per Square Mile
26 - 100	\$150 - 300
101 - 500	\$95 - 150
501 - 1000	\$75 - 140
1001 - 3000	\$66 - 130
3000 +	\$65 - 110

3-inch Imagery Options

Contiguous Square Miles	Price Per Square Mile
26 - 100	\$400 - 600
101 - 500	\$175 - 350
501 - 1000	\$150 - 300
1001 +	\$130 - 200

Planimetric Mapping / Impervious Surface Mapping

Case by case, negotiable

Lidar acquisition / processing

Case by case, negotiable

Surdex Sales Contact

Tim Donze
VP Business Development
DIRECT 314-422-7616
OFFICE 636-368-4424
MAIN 636-368-4400
EMAIL TIMD@SURDEX.COM
Surdex Corporation
520 Spirit of St. Louis Blvd.
Chesterfield, MO 63005

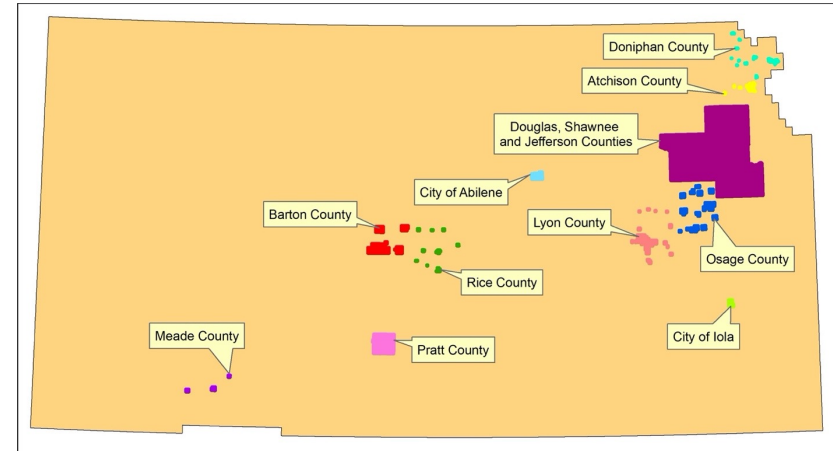
Kansas Program Contact

Kenneth A. Nelson
Kansas Geographic Information Officer
VOICE 785-864-2164
FAX 785-864-5317
EMAIL NELSON@KGS.KU.EDU
State of Kansas Data Access & Support Center (DASC)
Kansas Geological Survey (KGS)
University of Kansas, 1930 Constant Avenue
Lawrence, KS 66047



Your Strategic Geospatial Resource
surdex.com • 636-368-4400 • info@surdex.com

- Previous buy-up participants:
 - 12 buy-up projects
 - 3,540 square miles



- All buy-up projects will be designed and estimated based on the needs of each organization
- Agreements between organization and Surdex
- Contact Jack King
 - jack.king@surdex.com
 - (601) 405-4070

NG911 Toolbox Update

Kristen Jordan Koenig

GeoMSAG and Training Update

PSP

AT&T's Public Safety Platform

- New home for MSAG and telephone records
- Built with GIS data in mind
- We'll do a gradual conversion, starting with one PSAP
- We are working out a plan for all GIS maintainers to have access to view their PSAP's data

Training

The Kansas NG911 Learning Center

- Data Maintainer class video from KAM 2021 is unavailable
- Data Steward and Data Maintainer classes will be available on the KS911CC new platform in 2022
- More information to come!



NG911 GIS User Group

Thank you!

Kansas 911 Coordinating Council website

<http://www.kansas911.org/>

DASC - Initiatives>NG911

<http://www.kansasgis.org/initiatives/NG911/>