

# Kansas NG911 GIS User Group

2022 Q2 Meeting

June 23, 2022



# NG911 GIS User Group Agenda

---



- NG911 Project Update
- NG911 Toolbox Update
- GeoMSAG and Training Update



2022 Q2 NG911 GIS data submission deadline - June 30, 2022

# Kansas 2021 NG911 Imagery Distribution



## DASC Kansas Geoportal Hub

- Statewide Public Image Service
- Download Kansas Imagery application
  - MRSID files
- Large order via external HD data request

## Hosted Solution RapidDeploy Mapping Software

- Dedicated tile cache for NG911 map

Local Imagery Buy Up Option – still available

- **Contact Jack King**
  - [jack.king@surdex.com](mailto:jack.king@surdex.com)
  - (601) 405-4070

New DASC website - Update your bookmarks



## EXPLORE DATA CATEGORIES



BOUNDARIES AND  
DEMOGRAPHICS



CADASTRAL



CRITICAL  
INFRASTRUCTURE



ELEVATION



ENERGY AND  
UTILITIES



HEALTH AND  
ENVIRONMENT



IMAGERY AND  
BASEMAPS



LAND COVER  
GEOLOGY, SOILS



RECREATION



TRANSPORTATION

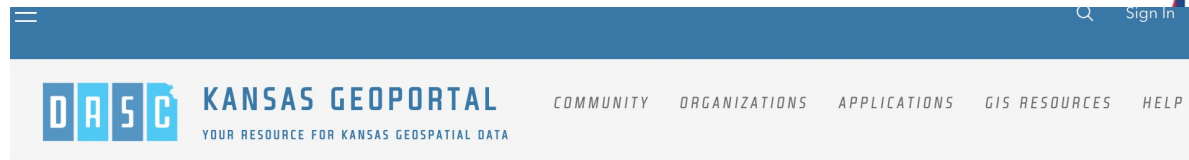


WATER

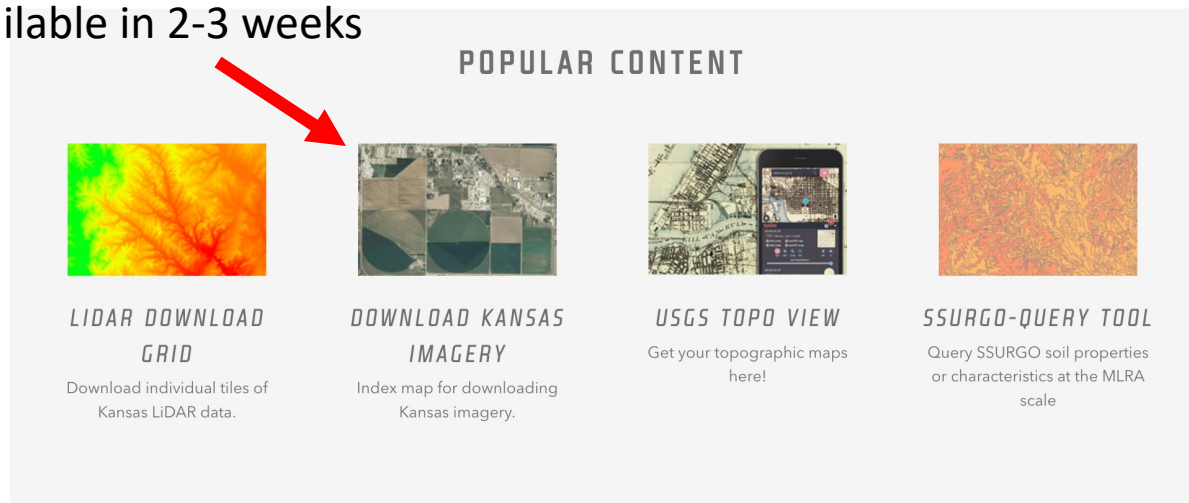


ALL DATA

# Kansas 2021 NG911 Imagery Distribution



Imagery will be available in 2-3 weeks



## DASC INITIATIVES



# Kansas NG911 Imagery



## Andover Tornado

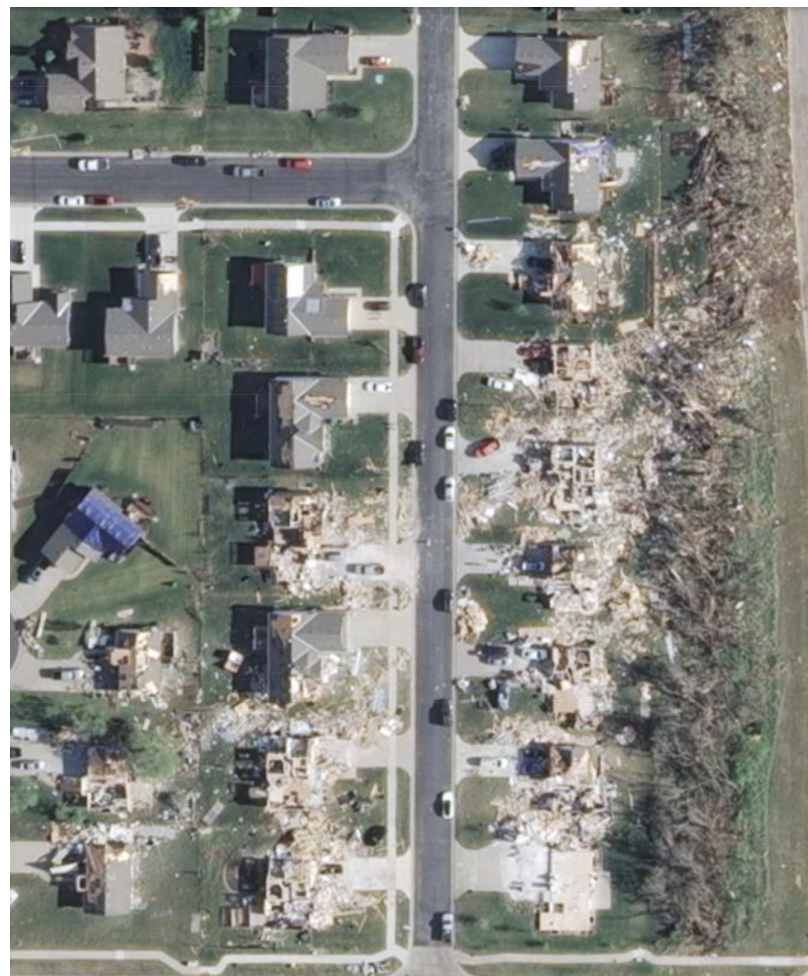
- Surdex captured imagery of tornado path less than 48 hours after the tornado
- DASC developed a web application containing imagery cache of the tornado and NG911 2021 imagery

## Tornado path provided by

- Pam Dunham, Butler Co GIS Director
- Jack Joseph, Sedgwick Co GIS Director

## 2015 & 2018 NG911 Imagery

- Publicly available on DASC website
- Statewide Image Service
- MRSID file downloads
- Large quantity ext HD data request



*Andover, KS – May 1, 2022*



# NG911 Toolbox Update



2.2.96 & Upcoming Changes  
William Trimble

# Release 2.2.96

Check for <Null> or "" values in Address Point SUBMIT field. (43 records out of ~1.5 million, in 2 PSAPs)

- Loophole in logic checks allowed <Null> or blank string values into the Submit field for address points.
- Results provided in TemplateCheckResults and FieldValueCheckResults tables.

TemplateCheckResults

OBJECTID *	DATEFLAGGED	DESCRIPTION	CATEGORY	CHECK
6	2/16/2022	Error: AddressPoints has 42 records with NULL or blank string values in the SUBMIT field	Submission	Check Submission Values

FieldValuesCheckResults

OBJECTID *	DATEFLAGGED	DESCRIPTION	LAYER	FIELD	FEATUREID	CHECK	NOTES
696	2/16/2022	Error: AddressPoints has NULL or blank string values	AddressPoints	SUBMIT	370db7f4-e3d9-4aa2-8a2c-736477a11b5e	Check Attributes	<Null>
697	2/16/2022	Error: AddressPoints has NULL or blank string values	AddressPoints	SUBMIT	2f412aae-5bf5-4d86-8015-3b86e148dc73	Check Attributes	<Null>
698	2/16/2022	Error: AddressPoints has NULL or blank string values	AddressPoints	SUBMIT	e879d4d1-737d-4e9b-9ab6-02a445c94ab8	Check Attributes	<Null>
699	2/16/2022	Error: AddressPoints has NULL or blank string values	AddressPoints	SUBMIT	b575bc17-d310-4977-8040-41f0e1860d12	Check Attributes	<Null>
700	2/16/2022	Error: AddressPoints has NULL or blank string values	AddressPoints	SUBMIT	75589863-12d7-4ee6-920e-1da137f9b5c7	Check Attributes	<Null>
701	2/16/2022	Error: AddressPoints has NULL or blank string values	AddressPoints	SUBMIT	83a79e5c-39bc-4128-bb64-8283f157c5f5	Check Attributes	<Null>
702	2/16/2022	Error: AddressPoints has NULL or blank string values	AddressPoints	SUBMIT	dd2f55fe-8e6e-40de-aac1-9dc2b317729e	Check Attributes	<Null>
703	2/16/2022	Error: AddressPoints has NULL or blank string values	AddressPoints	SUBMIT	f494802e-a8ef-4270-bda2-0e78e250e1ba	Check Attributes	<Null>
704	2/16/2022	Error: AddressPoints has NULL or blank string values	AddressPoints	SUBMIT	d5f764e7-1fe0-4d48-94a8-50bf013dcef3	Check Attributes	<Null>
705	2/16/2022	Error: AddressPoints has NULL or blank string values	AddressPoints	SUBMIT	043e26c6-575c-452e-94d4-22ff303e124c	Check Attributes	<Null>

# Release 2.2.96 (continued)



Begin quality control checks on address points marked as Address Point GeoMSAGs. (GEOMSAG = 'Y')

- Convert address point GeoMSAGs to point lines (plines) and check for overlapping ranges along with the road centerlines.
- Checked at submission and on demand with a toolbox Enhancement tool.

All errors will be marked as notices for the first quarter of release (2022 Q3) to allow people time to become familiar with the tool and to correct issues.



# Release 2.2.96 (continued)



Address Point GeoMSAG analysis is currently being reviewed for the PSP beta testing group since it also meets some needs for that conversion.

- 11 PSAPs had no errors.
- 5 remaining PSAPs averaged 6 address point geoMSAG errors with a high of 12 and a low of 1.



# Future Toolbox Changes

Discuss options for controlling the level of submission for Address Points.

- Better clarify and define how to submit address points that are:
  - Ignored (local use)
  - Are submitted for use in Address Locators and Rapid Deploy only but not EGDMS
  - For all uses. (Address Locators, Rapid Deploy, and EGDMS)
- Roll out with Data Model 3.0



# GeoMSAG and Training Update

# Kansas NG911 GIS Data Model



- Version 3.0 update
  - Work will start when NENA's NG911 GIS Data Model v2 is published.
  - NENA's doc is done with 2<sup>nd</sup> public review
  - If there are NO substantial changes from those comments, it will publish shortly
  - If there are ANY substantial changes from those comments, it will go back for a 3<sup>rd</sup> public review

# PSP

## AT&T's Public Safety Platform



- Beta Test team will be working through issues in GIS data processing and establishing procedures for ongoing MSAG maintenance
- Reminder: AT&T has agreed to give access to all GIS maintainers and stewards
- Built for our data, including our flags: AUTH, GEOMSAG, SUBMIT





# Training

## The Kansas NG911 Learning Center

- Data Maintainer class pre-conference at KAM from 9-12 on Tuesday, October 18 *Registration is free but required*
- Data Steward and Data Maintainer classes will be available on the KS911CC new platform in 2022

## DASC INITIATIVES

**ORKA**  
Open Records for Kansas Appraisers



**NG911**  
Kansas Next Generation 911



**KRCS**  
Kansas Regional Coordinate System

**PWS**  
KWO Public Water Supply System



**TAX UNITS**  
Statewide GIS Tax Unit Boundary



**LOCAL**  
Remote

## KANSAS NEXT GENERATION 911

Geographic Information System (GIS) technology, associated statewide geographic data layers, and location-based system components are the cornerstone of a Next Generation 911 (NG911) system.

## KANSAS NG911 GIS INITIATIVE TIMELINE

### KANSAS 911 ACT SIGNED ON MAY 18, 2011

2013	<ul style="list-style-type: none"> <li>Kansas NG911 Project started on November 13, 2013</li> <li>GIS : Pilot Study completed, Statewide GIS Enhancement Project launch</li> </ul>
2014	<ul style="list-style-type: none"> <li>GIS : Pilot Study completed, Statewide GIS Enhancement Project launch, Kansas GIS Data Model v1.0, NG911 Toolbox launch, Statewide Imagery RFP</li> </ul>
2015	<ul style="list-style-type: none"> <li>First PSAP cut over to Hosted Solution, 11 PSAPs live on Hosted Solution</li> <li>GIS : Statewide GIS Enhancement Project (on-going) Gap Analysis, Data Remediation &amp; QA, Kansas GIS Data Model v1.1, Statewide Imagery available, NG911 Coordinating Council Program Portal launch, <b>GIS Data Maintenance begins</b></li> </ul>
2016	<ul style="list-style-type: none"> <li>47 PSAPs live on Hosted Solution + one backup center (Yoder)</li> <li>GIS : <b>Statewide GIS Enhancement Project completed, begin Quarterly NG911 Portal GIS data Maintenance submissions required for all PSAPs</b>, Kansas GIS Data Model v2.0, MSAG/GIS data alignment</li> </ul>
2017	<ul style="list-style-type: none"> <li>77 PSAPs live on Hosted Solution + two backup centers, 911 Coordinating Council signs contract with ESInet partner, First Kansas PSAP transitions to AT&amp;T's National ESInet</li> <li>GIS : Kansas GIS Data Model v2.1, MSAG/GIS data alignment</li> </ul>

## New DASC website

- On the new home page, scroll down to DASC Initiatives section and click on NG911



# NG911 GIS User Group

Thank you!

Kansas 911 Coordinating Council website

<http://www.kansas911.org/>

DASC Kansas Geoportal Hub

<https://ng911.kansasgis.org/>