

# Kansas NG911 GIS User Group



2023 Q3 Meeting



August 2, 2023

Webinar





NG911 Project Update

01



NG911 Toolbox Update

02



GeoMSAG and Training Update

03



## Kansas Hosted Solution

- August – Marshall
- September/October – Brown/Horton PD
- By end of 2023, all Kansas PSAPs will be on either the Kansas Hosted Solution or part of MARC region

## RapidDeploy Radius v5

- Finalizing migration plan
- Anticipate will begin upgrade this month



## Data

- Going public very soon – PSAP approved NG911 Address Points and Road Centerlines
- Optional data is important too like City Boundaries & Parcels

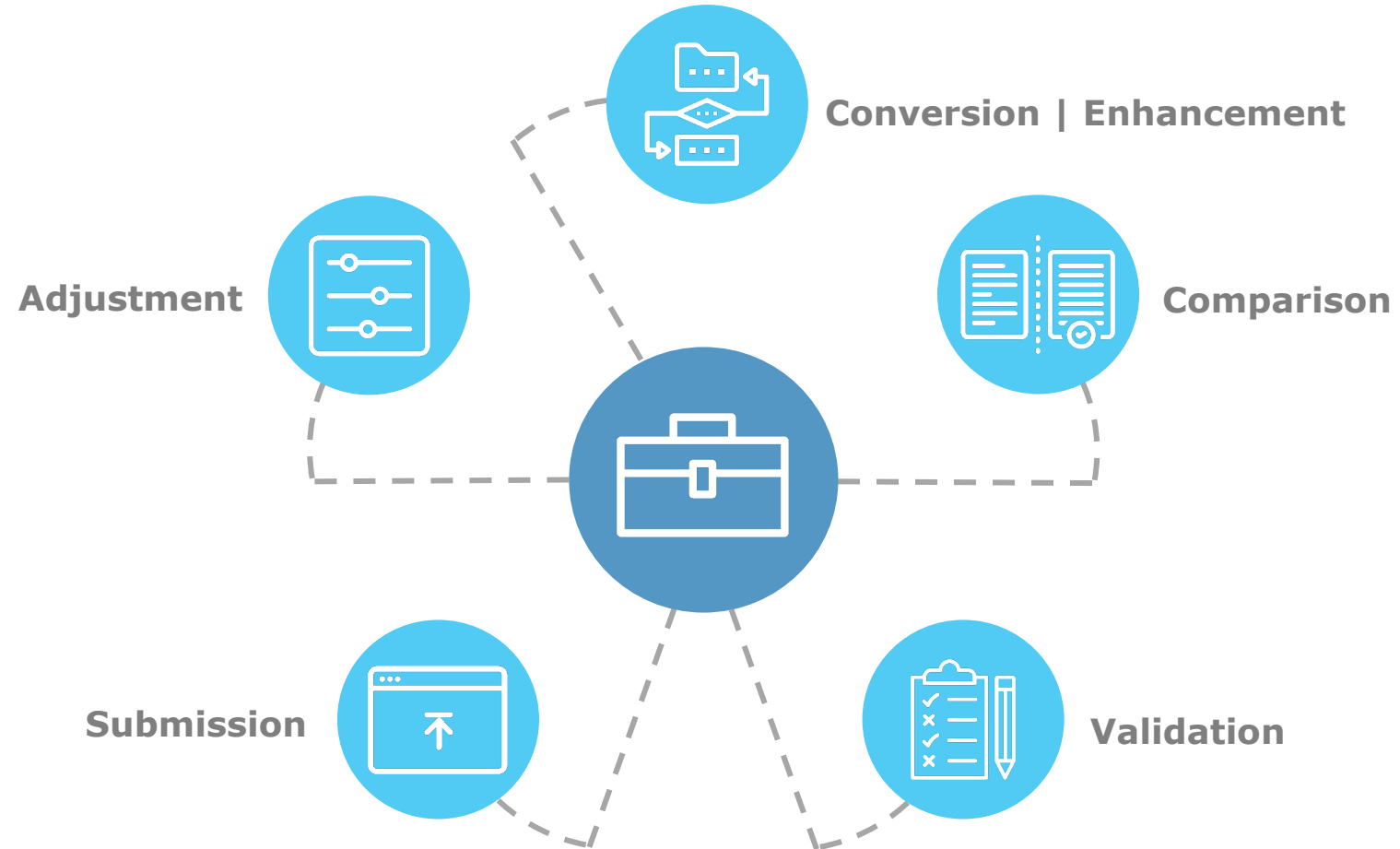
## Imagery

- 2024/2025 imagery acquisition
- Leaf off, 1 foot resolution, natural color
- Imagery vendor - Surdex
- Target flying season late winter (Feb/March)
- Local Buy Up option still available!!!



## NG911 Toolbox Update

Version 2.2.98 & Upcoming Changes





## Release 2.2.98



**2023-02**  
**Week of 5/7**  
**DELAYED**

→ **2023 – Q3**  
**Monday, 8/7**



Validation

Remove logic check loophole allowing blank value in Yes/No **AUTHORITATIVE L/R** field in Road Centerline feature class.

Causing issue with PSP MSAG generation processing.



Validation

Modify the new error message for the AP GEOMSAG overlap check in the FieldValueCheckResults table to better differentiate between overlaps that are RC vs RC and RC vs AP.



**Required additional QC of results.**



Conversion

Fix issue with the Copy to Template tool correctly being able to enable/disable editor tracking and load data into the template when additional feature classes/tables exist for the AP GEOMSAG checks in the source database.



## Release 2.2.98



→ 2023 – Q3  
Monday, 8/7



Validation

Minor changes to hard coded values in processing for new counties transitioning to the hosted solution. Corrects inaccurate reporting for missing municipal domains and multi-steward PSAPs.



## Future 2023 Release



**TBD**



**Validation**

**Modify the AP GEOMSAG overlap check to properly account for ESN boundaries as a differentiator between road centerlines and address point GEOMSAGs with duplicate ranges.** (Reported: Ellis County – William Wallace | Thank you!)



**MSAG**

**Add “Check PSP TN List” Tool to MSAG toolbox section that accommodates differences between current 911Net and PSP TN databases.**



**Complete testing and adjustments for official ArcGIS Pro / Python 3 toolbox support.**





## Friendly Data Quality Reminder

2023 Q3 Edition

**When making spatial/attribute changes or creating new features, be sure to update the [L\_UPDATE] field attribution if local editor tracking is not enabled.**

(The KS NG911 Template has editor tracking enabled for road centerlines and address points.)

**If a spatial edit is made, the attribution should be changed to match.**

**Increases data usability and accuracy!**

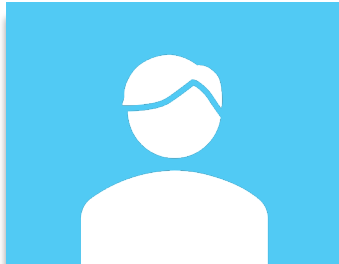
**For example, which source of data has the most recent Municipal Boundary edits.**



## GIS Toolbox Story Map Available

*Change log and detailed descriptions of new tools, error messages, and processes.*

**DASC Hub -> NG911 Initiative -> Standards -> GIS Tools and Scripts**



## Thank You Questions?

**William Trimble**  
GIS Developer



**williamtrimble@ku.edu**



**785-864-0355**



<https://tinyurl.com/yr3antht>



## Map Discrepancy Reporting in Radius

- Reporting issues with locally maintained GIS data
  - Address Corrections and Road Name issues
- Reporting problems with the mapping services
  - Layers that are not working or not updating
- We are doing training with PSAPs on how location technology works and how locations present to them on the map to help reduce the number of reports that are about the technology doing what it is designed to do.
- We are planning a KAM session on location technology and encourage you all to attend, if you are interested in how caller location works



## Kansas NG911 GIS Data Model v3

- Ready to be discussed by the GIS Committee once a date is set for our next meeting

## NENA NG911 GIS Data Model v3

- Work is ongoing with v3 of the national standard
- Best guess is that it will be ready next summer
- Big items are adjusting for the needs of 3d call location and mapping and developing an alternate version that is relational



## The Responder App

- A mobile phone version of the RadiusPlus map for use in the field
- The app is still under development, but the Council has approved the purchase with unlimited licenses once it is ready
- It is expected to be released in January 2024
- It will be made available to all first responders in the state, assuming their agency and their PSAP are interested
- We are planning a very slow rollout, as there are a lot of moving parts



## Standard Training

- Data Maintainer will be offered pre-conference at KAM
  - Is there anything specific you would like to see covered?

## On the horizon

- Training for GIS Maintainers on the use of AT&T's PSP platform
  - AT&T may offer standard training
  - We will offer specific training about using PSP in the Kansas NG911 GIS program, likely as a webinar that will be recorded



## Wrap Up

2023 NG911 GIS User Group meeting schedule

- KAM Conference – October 24-27 in Wichita

GIS Data Maintainer class at KAM Conference

- Tuesday, Oct 24 pre-conference workshop
- *There is no charge to attend this workshop but you must register -*
  - <https://www.kansasmappers.org/preconference>

DASC Hub

<https://hub.kansasgis.org/>

Kansas 911 Coordinating Council

<https://www.kansas911.org/>

