

# Kansas NG911 GIS User Group



2023 Q4 Meeting



October 26, 2023

Kansas Association of Mappers (KAM) Conference





 NG911 Project Update 01

 NG911 Toolbox Update 02

 GeoMSAG and Training Update 03



## Kansas Hosted Solution

- All Kansas PSAPs are on either the Kansas Hosted Solution or on the MARC region system

## ✘ RapidDeploy Radius v5

- Deployment delayed until at least mid-November
- Does not affect GIS data services data feed and map functionality
- Adds more Admin level control and some new telecommunicator tools



## Data

- NG911 Address Points – 81 PSAP approved
  - ☀️ Now available on the DASC Hub!
- NG911 Road Centerlines - 84 PSAP approved so far ...
- Kansas Admin Boundary Data Committee
  - City Boundary comparison project

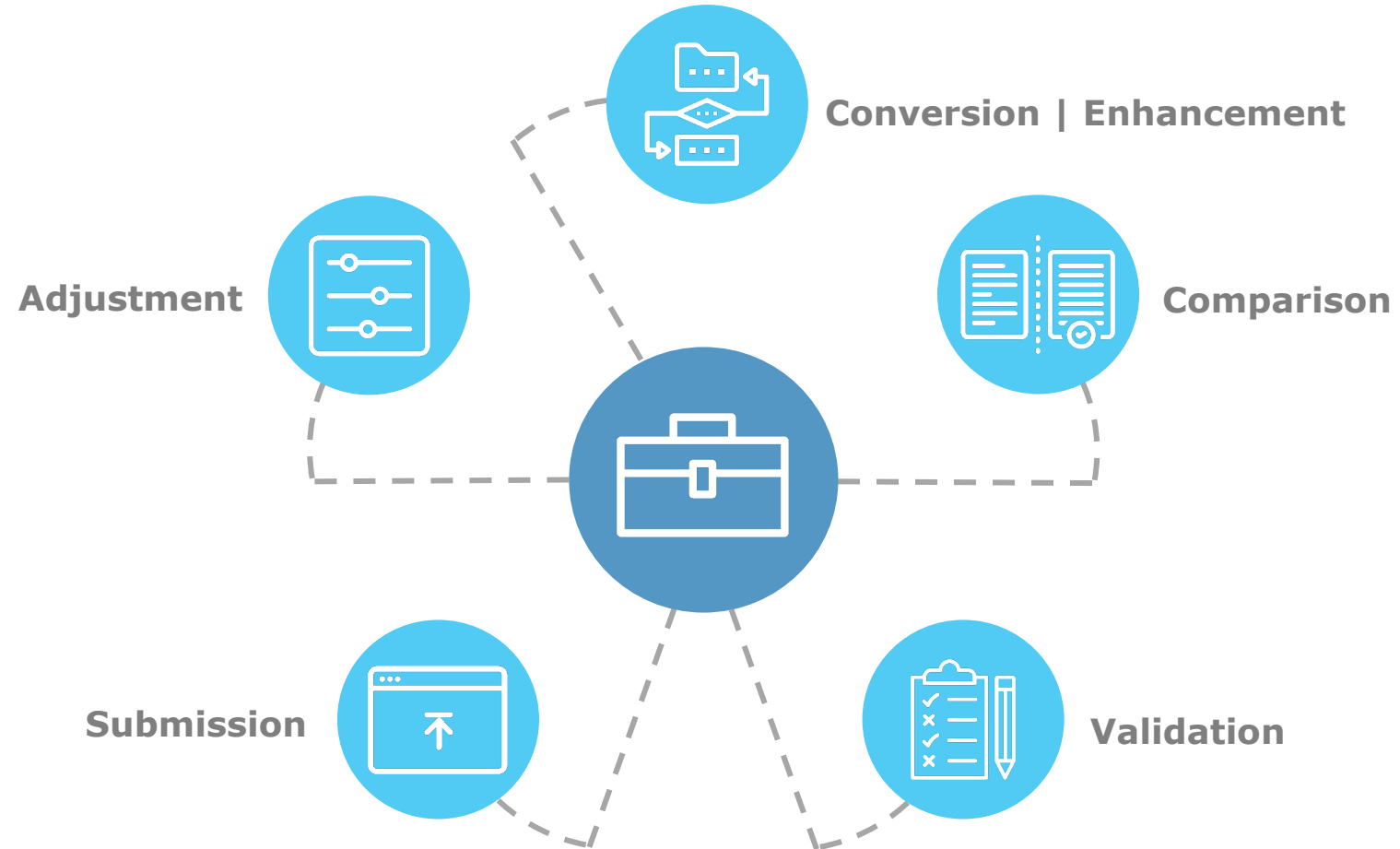
## Imagery

- 2024/2025 imagery acquisition
- Leaf off, 1 foot resolution, natural color
- Imagery vendor - Surdex
- Target flying season late winter (Feb/March)
- Local Buy Up option still available!!!
- We will again need your help with the imagery QA – late 2024



## NG911 Toolbox Update

Version 2.2.99 & Upcoming Changes





## Release 2.2.99



2024 – Q1



Complete testing and adjustments for official ArcGIS Pro / Python 3 toolbox support.



Update\refresh toolbox documentation files, tool tips, and training materials.



Validation

Modify the AP GEOMSAG overlap check to properly account for ESN boundaries as a differentiator between road centerlines and address point GEOMSAGs with duplicate ranges. (Reported: Ellis County – William Wallace | Thank you!)



## Future 2024 Release



**TBD**



**MSAG**

**Add "Check PSP TN List" Tool to MSAG toolbox section that accommodates differences between current 911Net and PSP TN databases.**



## Friendly Data Quality Reminder

2023 Q4 Edition

**When making spatial/attribute changes or creating new features, be sure to update the [L\_UPDATE] field attribution if local editor tracking is not enabled.**

**(The KS NG911 Template has editor tracking enabled for road centerlines and address points.)**

**If a spatial edit is made, the attribution should be changed to match.**

**Increases data usability and accuracy!**

**For example, which source of data has the most recent Municipal Boundary edits.**

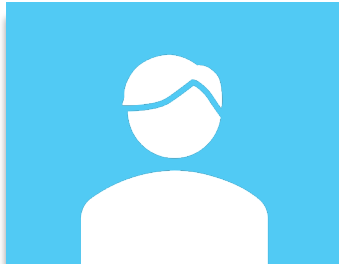




## GIS Toolbox Story Map Available

*Change log and detailed descriptions of new tools, error messages, and processes.*

**DASC Hub -> NG911 Initiative -> Standards -> GIS Tools and Scripts**



# Thank You

# Questions?

**William Trimble**  
GIS Developer



**williamtrimble@ku.edu**



**785-864-0355**



<https://tinyurl.com/yr3antht>



## Map Discrepancy Reporting in Radius

- Reporting issues with locally maintained GIS data
  - Address Corrections and Road Name issues
- Reporting problems with the mapping services
  - Layers that are not working or not updating
- We are doing training with PSAPs on how location technology works and how locations present to them on the map to help reduce the number of reports that are about the technology doing what it is designed to do.



## Kansas NG911 GIS Data Model v3

- The GIS Committee met on Tuesday to review the draft!

## NENA NG911 GIS Data Model v3

- Work is ongoing with v3 of the national standard
- Best guess is that it will be ready next summer
- Big items are adjusting for the needs of 3d call location and mapping and developing an alternate version that is relational



## The Lightning App

- A mobile phone version of the Radius Mapping for use in the field
- The app is still under development, but the Council has approved the purchase with unlimited licenses once it is ready
- It is expected to be released in January 2024
- It will be made available to all first responders in the state, assuming their agency and their PSAP are interested
- We are planning a very slow rollout, as there are a lot of moving parts



## Standard Training

- Data Maintainer will be offered pre-conference at KAM
  - Is there anything specific you would like to see covered?

## On the horizon



AT&T 9-1-1 Public Safety Platform

- Training for GIS Maintainers on the use of AT&T's PSP platform
  - AT&T will offer training in the use of their UI, but it will not be specific to Kansas
  - We will offer specific training about using PSP in the Kansas NG911 GIS program, likely as a webinar that will be recorded



## Wrap Up

### 2024 Kansas NG911 GIS outreach and training

- Quarterly user group webinars
- Training plan
  - In person - KAM 2024
  - Kansas 911 CC Learning Platform

### DASC Hub

<https://hub.kansasgis.org/>



### Kansas 911 Coordinating Council

<https://www.kansas911.org/>

