

Kansas NG911 GIS User Group



2024 Q3 Meeting



August 20, 2024





NG911 Project Update

01



NG911 Toolbox Update

02



GeoMSAG and Training Update 03



2024 Kansas NG911 Imagery

2024 imagery

- statewide, 1-foot, leaf-off, color/CIR
- GeoTIFF, MrSID, and **Cloud Optimized GeoTIFF (COG)**
- *horizontal accuracy - 30cm RMSE x,y*

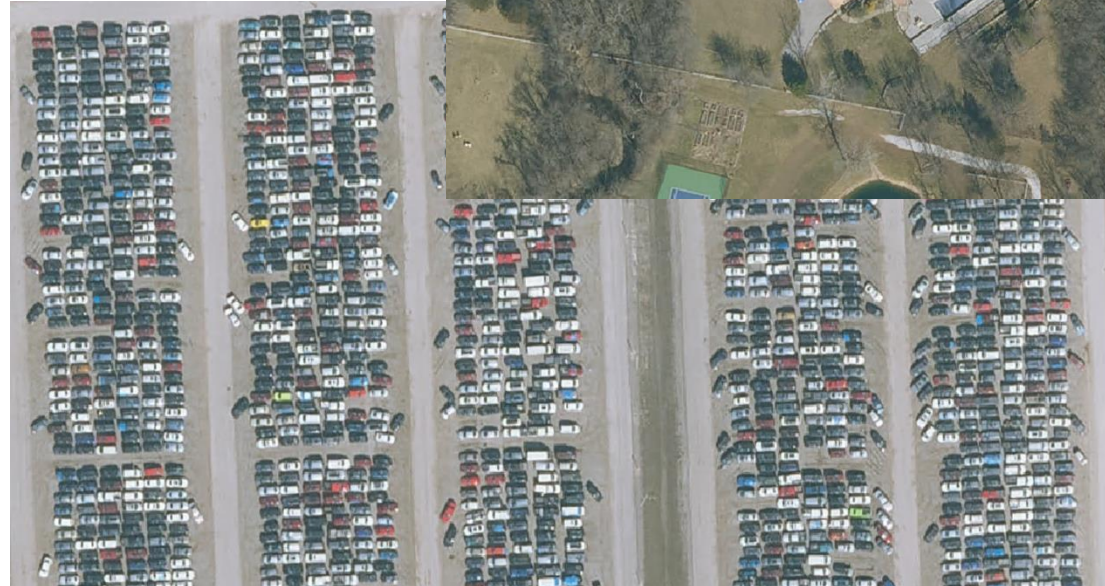
Additional Services:

- Buy-up program – jack.king@surdex.com

Timeline

- **Fall 2024 - Imagery QA**
- Late 2024/Early 2025 – Imagery delivery

Current activity - review of pilot tiles

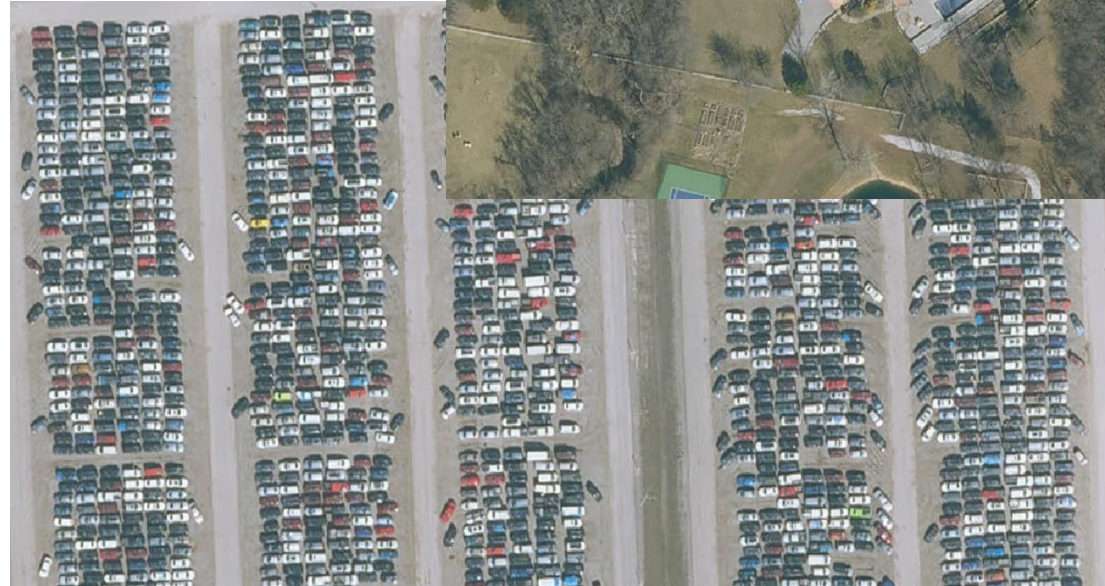




2024 Kansas NG911 Imagery

QA/QC

- Visual review of imagery using Surdex's SurCheck web-based tool
- Call for Volunteers announcement coming soon
- Review areas county based or can be subdivided if you have more than 1 volunteer for your county
- We had 52 data inspectors in 2021 so let's go for 60 in 2024!





House Bill 2690 –July 1, 2024

- GIS data specifically called out as an allowable use of 911 fees
 - *"maintenance and updates that are necessary to maintain accurate GIS data"*
- Cities and counties who contract with someone else for 911 calls are statutorily required to continue maintaining their own GIS data.



House Bill 2690 –July 1, 2025

- KS 911 Coordinating Council becomes the State 911 Board, a state agency
- Two non-voting members become voting members: KAC and LKM
- All employees, contracts, and property of the Council move to the Board
- Establishing "*minimum training requirements*" for GIS and IT "*technicians with respect to the statewide NG911 call handling technology*" becomes a statutory obligation of the State 911 Board



Sherry Massey has been tapped to become the Executive Director of the new Kansas 911 Board!!!



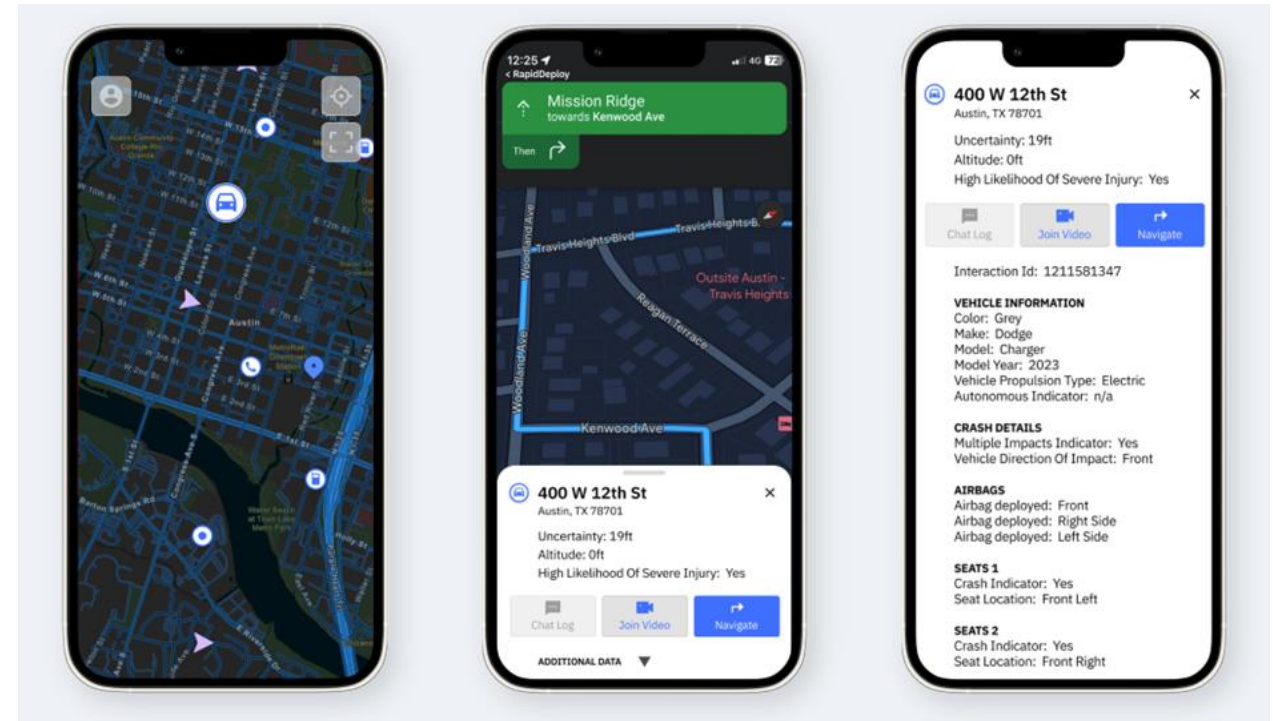
Sherry's email has changed!

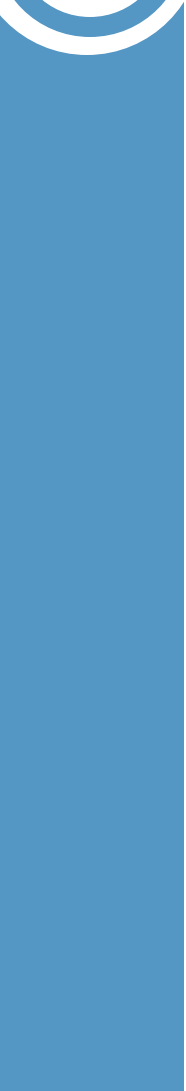
sherry.massey@ks.gov





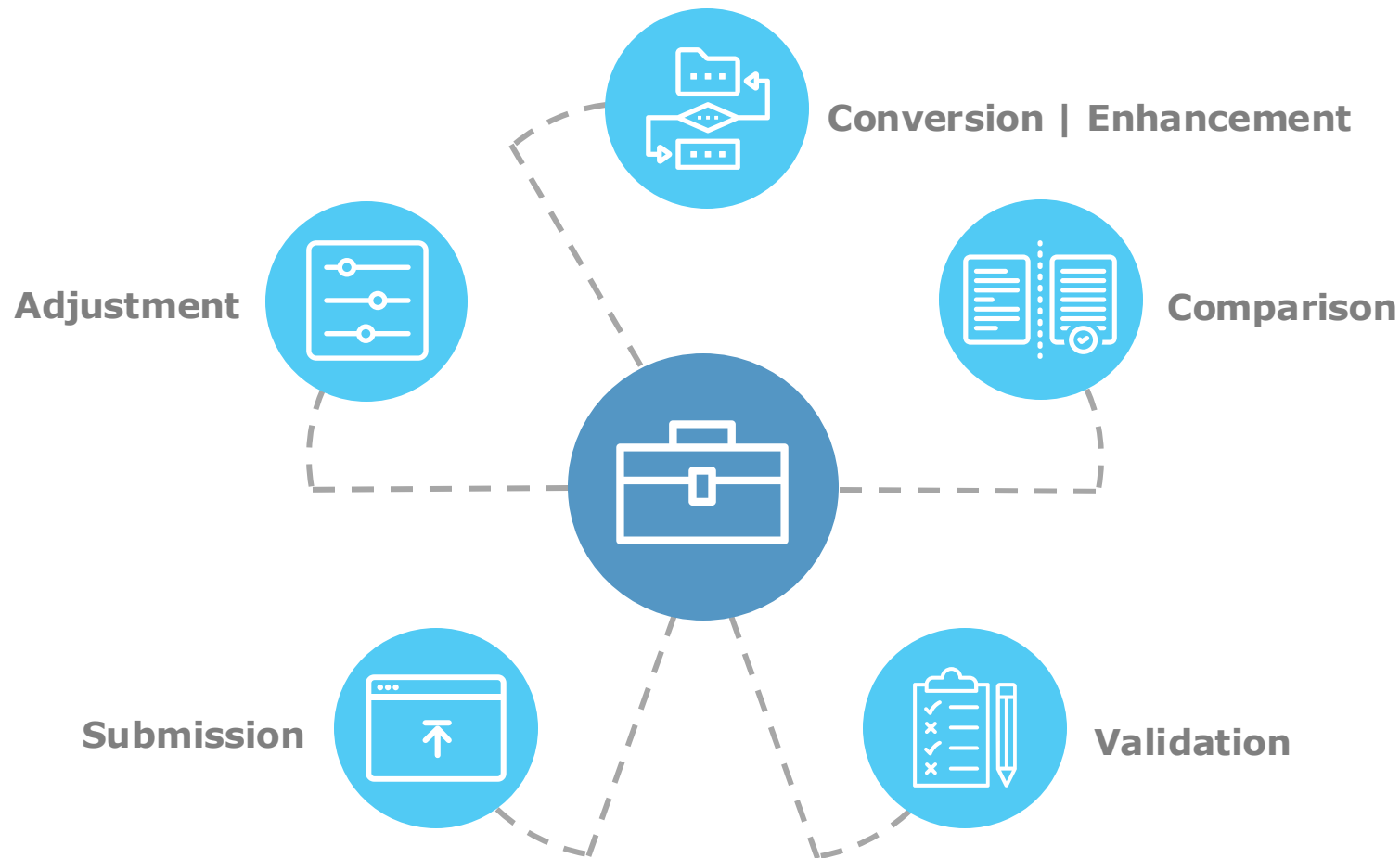
- Mobile mapping application providing 911 data directly to first responders
- Local, authoritative Kansas basemap and associated map services are available through the app
- DASC statewide GIS aggregator
 - Light and Dark mode map
 - Additional architecture and services to support





NG911 Toolbox Update

Version 2.2.99 & Upcoming Changes





Release 2.2.99



2024 – Q4



Complete testing and adjustments for official ArcGIS Pro / Python 3 toolbox support.

Initial Pro release will be alongside the current Python 2 version with a limited toolbox set focused on validation and submission tools in Python 3. The goal is to provide as much backwards compatibility as possible for as long as necessary.



Update\refresh toolbox documentation files, tooltips, and training materials.

Addition of a new training format via ESRI storymap.



Release 2.2.99



2024 – Q4



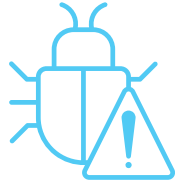
Minor post processing edits to account for changes in Kansas NG911 GIS Data Model v3.



Release 2.2.99



2024 – Q4



Toolbox Bug Fixes

- ▲ Correct some minor logic holes in the road centerline overlap check introduced with the Address Point GeoMSAG comparison.
- ▲ Properly account for ESN boundaries as a differentiator between road centerlines and address point GEOMSAGs with duplicate ranges.
- ▲ Remove false positives for road centerline segments marked as not for submission or not authoritative.
- ▲ Properly account for the differences between allowable and incorrect self-overlap scenarios.
- ▲ Clean up comparison for road segments designated with a PARITY of B (Both)



Future 2024 Release



TBD



MSAG

Add "Check PSP TN List" Tool to MSAG toolbox section that accommodates differences between current 911Net and PSP TN databases.



GIS Toolbox Story Map Available

Change log and detailed descriptions of new tools, error messages, and processes.

DASC Hub -> NG911 Initiative -> Standards -> GIS Tools and Scripts



Thank You

Questions?

William Trimble

GIS Developer



williamtrimble@ku.edu



785-864-0355



<https://tinyurl.com/yr3antht>



Indoor Mapping Project

- Three companies using different methodologies are mapping Central Elementary in Lyons, KS
- We will review what they produce for a few things
 - Can it be used in Radius without much work?
 - Will it help with vertical (z-axis) caller locations?
 - What else can be done with the data?
- The goal is an informational document for anyone considering indoor mapping in Kansas



Kansas NG911 GIS Data Model v3

- Will be published October 1st
- There is no specific maintenances requirements changed
 - Some reorganization and reprioritization of layers
 - Some appendices added with additional reference information

NENA NG911 GIS Data Model v3

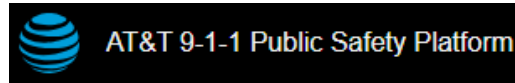
- Work is ongoing with v3 of the national standard
- Best guess is that it will be ready for public review Q4 of this year.
- At this time, no major changes that would affect local maintainers in Kansas



Standard Training

- Data Maintainer will be offered pre-conference at KAM
 - Is there anything specific you would like to see covered?

On the horizon



- Training for GIS Maintainers and PSAP personnel on AT&T's PSP platform
 - PSP's Transitional Data Management Service (TDMS) update - project on hold
- New GIS Data Maintenance reporting
 - A new report will be sent to GIS data maintainers with any telephone record addresses that are missing from the address point data



Executive Director Changes

- Will and Eileen will still be contacts for questions about NG911 GIS compliance.
- Scott Ekberg will start responding to Map Discrepancy Reports
- Sherry will still lead Data Maintainer training this year



Wrap Up

2024 Kansas NG911 GIS outreach and training

- Quarterly user group webinars
- KAM 2024 - GIS Data Maintainer & NG911 GIS User Group Q4
- GIS Data Steward - Kansas 911 CC Learning Platform for PSAP personnel

DASC Hub

<https://hub.kansasgis.org/>



Kansas 911 Coordinating Council

<https://www.kansas911.org/>

